



FUSION X-Par 8Z  
CRI HQ Mode  
Photometric Report

Report 2024-06-05-2

GLP German Light Products GmbH  
GLP LightLab

CRI	90
Lamp	80W RGBL
Serial Number	23060100042
Measurement Date	2024-06-05 15:28



Contents

1	White Quality – White	2
1.1	TM-30-15 Detail Plots . . . . .	3
1.2	TLCI-2012 Results . . . . .	5

# 1 White Quality – White

Table 1: Summary for White spectral measurement results and color metrics.

Metric	Value
CCT	7074 K
CCT $D_{uv}$	0.0052
CRI $R_a$	90
CRI $R_g$	80
TLCI-2012	81
TM-30-15 $R_f$	100
TM-30-15 $R_g$	82
CIE 1931 x	0.304
CIE 1931 y	0.324
CIE 1960 u	0.193
CIE 1960 v	0.309

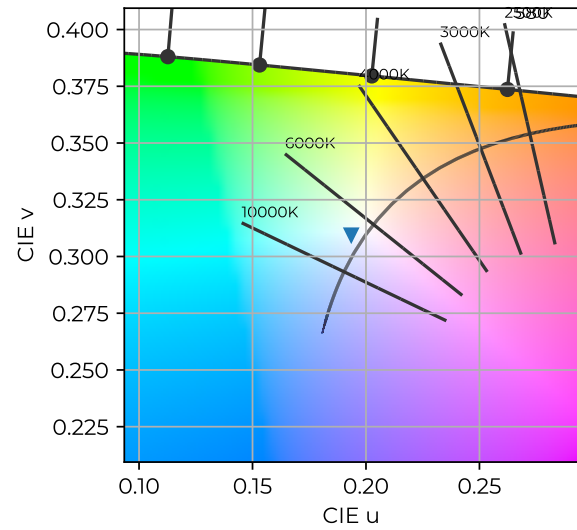


Figure 1: Color coordinates in CIE 1960 chromaticity diagram. White

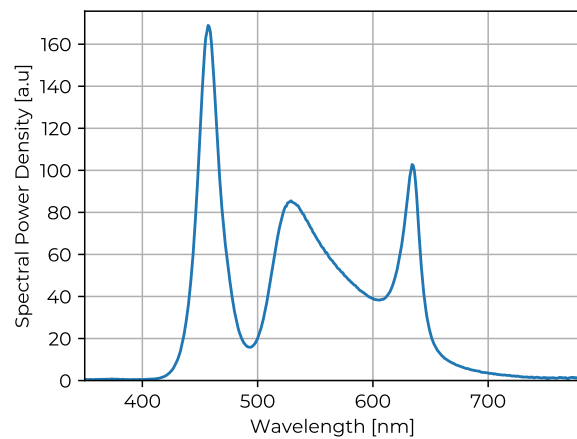
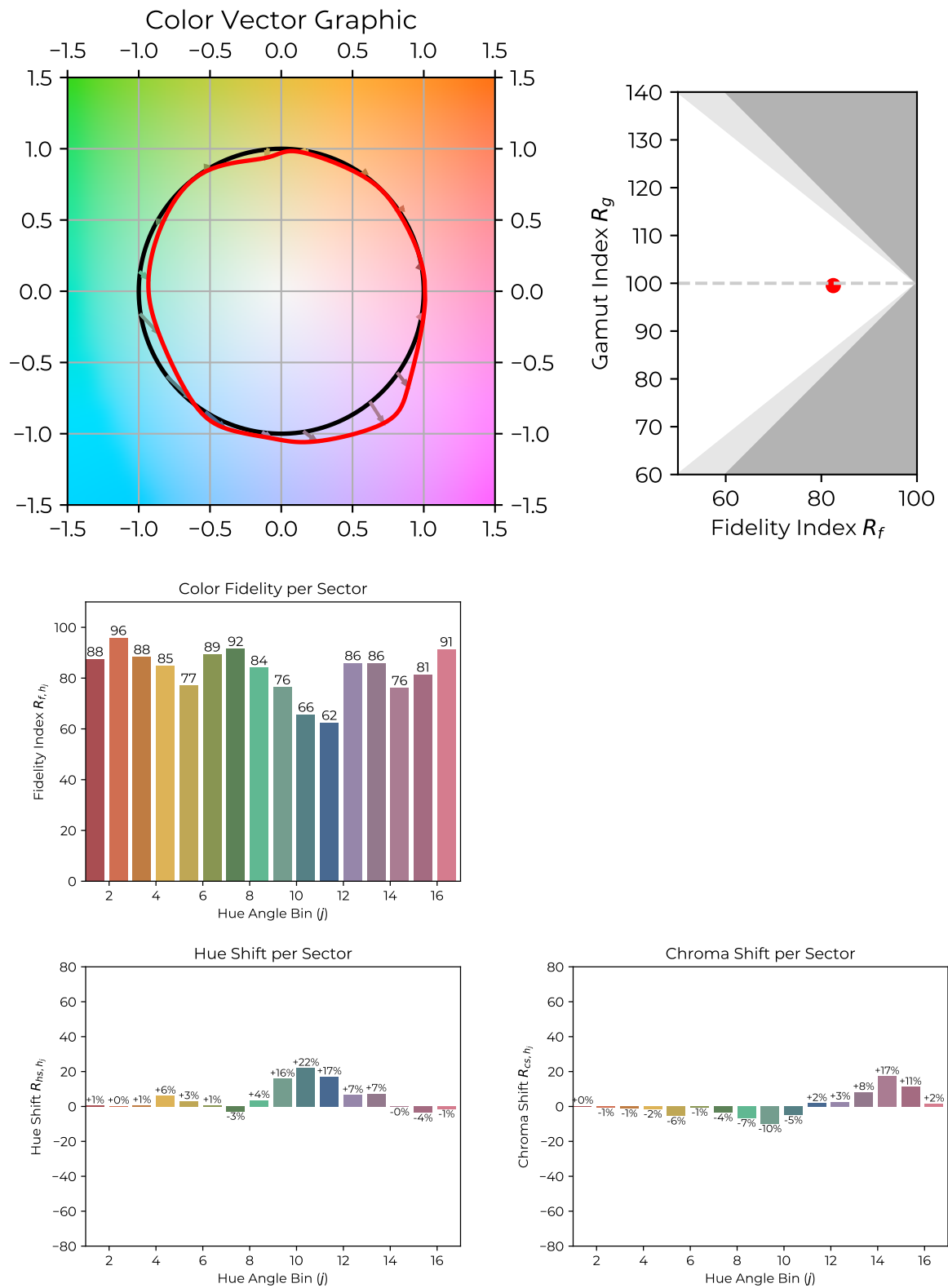
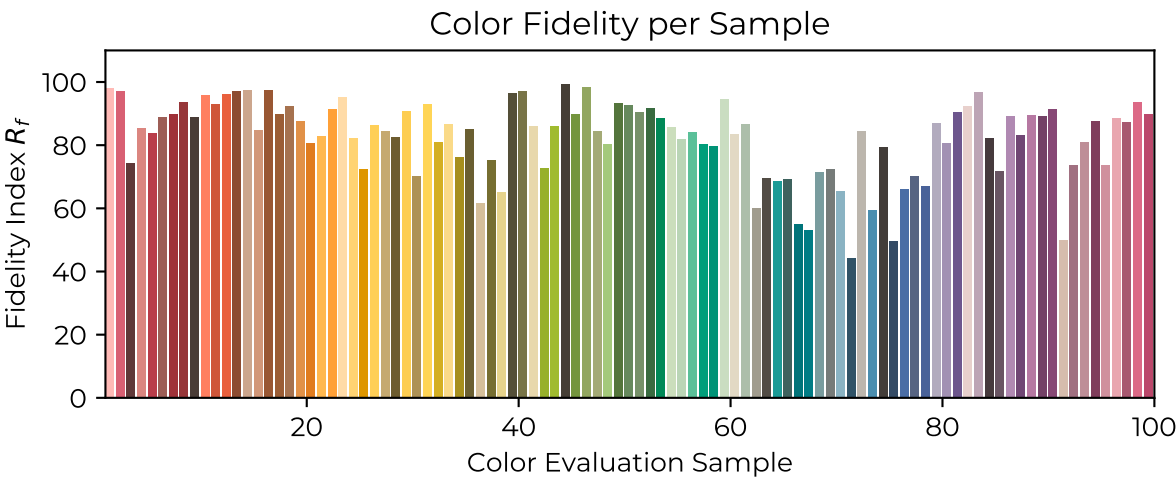


Figure 2: Measured Spectral Power Distribution of light source. White

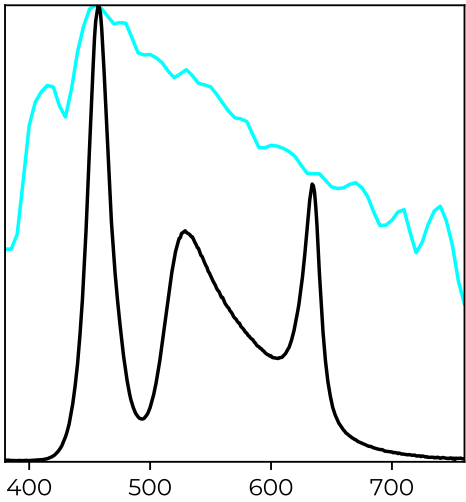
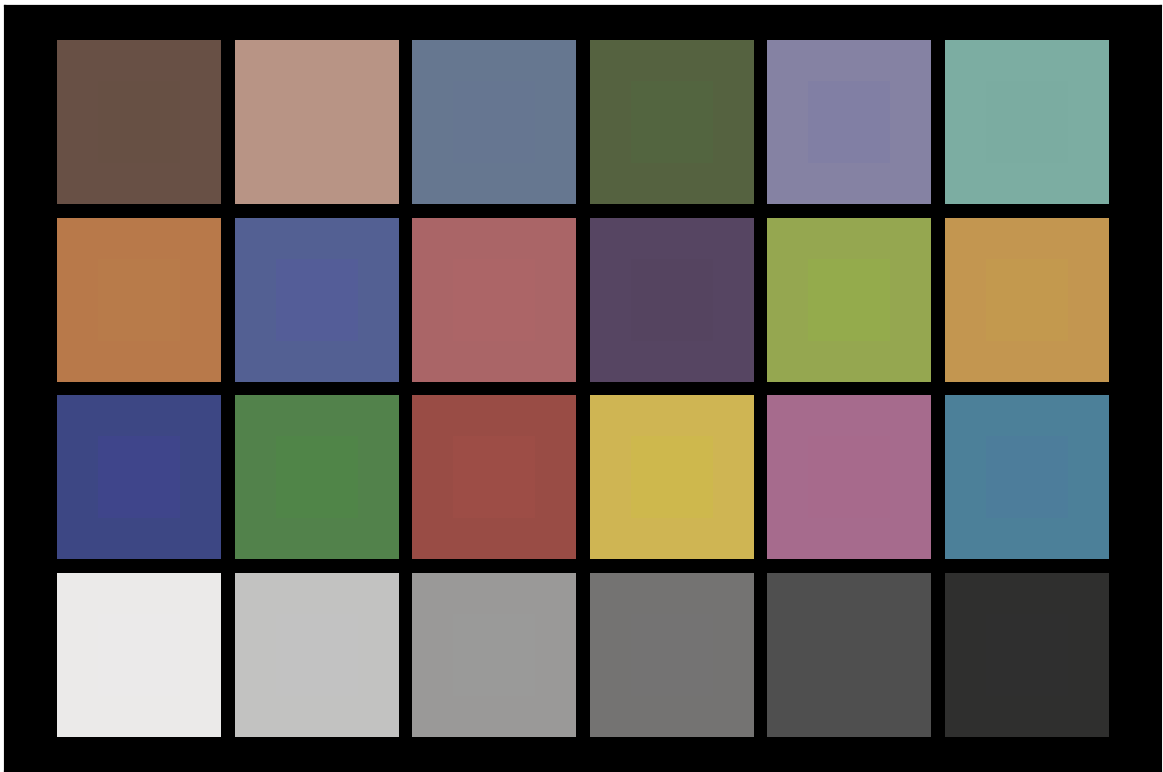
1.1 TM-30-15 Detail Plots





1.2 TLCI-2012 Results

FUSION X-Par 8Z White : CCT = D7074 0.36, Tlci = 81



Sector	Lightness	Chroma	Hue
R	1	1	1
R/Y	1	1	1
Y	3	3	3
Y/G	3	3	3
G	3	3	3
G/C	2	2	2
C	0	0	0
C/B	5	5	5
B	3	3	3
B/M	3	3	3
M	0	0	0
M/R	1	1	1